



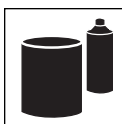
DuPont Automotive Finishes

DuPont 222S™ Mid-Coat Adhesion Promoter

Description

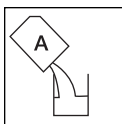
DuPont 222S™ is a ready-to-spray adhesion promoter for use over OEM clearcoat finishes.

General Information



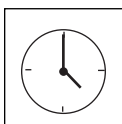
Components

DuPont 222S™ Mid-Coat Adhesion Promoter



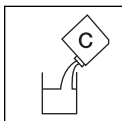
Mix Ratio/Viscosity

Ready-to-spray.



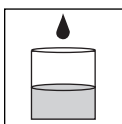
Pot Life

Indefinite.



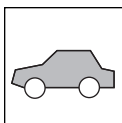
Additives

Accelerator:	Not recommended.
Fish Eye Eliminator:	Not recommended.
Flex Additive:	Not recommended.
Reducer:	Not required.
Retarder:	Not required.



Tinting

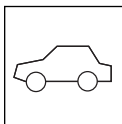
Not recommended.



Topcoats

ChromaPremier® Basecoat
 ChromaPremier® Single Stage (optional)
 ChromaBase®
 ChromaOne® (optional)

Application



Substrates

OEM finishes



Surface Preparation

- Sand with 1200 grit or finer.
- Remove sanding residue with DuPont Final Klean 3901S™, DuPont 3939S™ Lacquer and Enamel Cleaner or DuPont Low VOC Final Klean 3909S™.
- Tack area free of any dust or dirt particles.

DuPont 222S™ Mid-Coat Adhesion Promoter



Gun Setups*

Conventional

Siphon Feed:	1.5 mm - 1.7 mm (.059" - .067")
Gravity Feed:	1.4 mm - 1.6 mm (.055" - .063")

HVLP

Siphon Feed:	1.5 mm - 1.7 mm (.059" - .067")
Gravity Feed:	1.3 mm - 1.5 mm (.051" - .059")



Air Pressure*

Conventional

Siphon Feed:	30 - 35 psi @ the gun.
Gravity Feed:	25 - 30 psi @ the gun.

HVLP

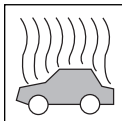
6 - 8 psi @ the gun cap.

*The listed setups cover the usual range for various application equipment. For information on specific manufacturers' equipment, see the Appendix section titled "Equipment Information."



Application

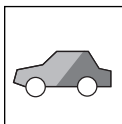
Apply 1 medium coat beyond the entire repair area. (See Blending Procedure in the Systems & Procedures section.)



Flash/Dry Times

Air Dry

Time to Topcoat: 5 - 10 minutes @ 70°F.

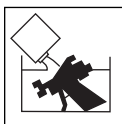


Recoatability/Re-repair

DuPont 222S™ may be recoated at any stage.

Tips for Success

If DuPont 222S™ dries for more than 2 hours, tack and reapply 1 coat of DuPont 222S™.



Cleanup

Clean spray equipment as soon as possible with DuPont Lacquer Thinner.

Physical Properties

VOC: 6.6 lbs/gal ready-to-spray.
Flash Point: See MSDS.

VOC Regulated Areas

These directions refer to the use of products which may be restricted or require special mixing instructions in VOC regulated areas. Follow mixing and usage recommendations in the VOC Compliant Products Chart for your area.

Safety and Handling

Before using any DuPont Refinish product, be sure to read all safety directions and warnings. WEAR A PROPERLY FITTED AIR PURIFYING RESPIRATOR with organic vapor cartridges (NIOSH approved TC-23C) and particulate filter (NIOSH TC-84A), eye protection, gloves and protective clothing during application and until all vapors and spray mists are exhausted. In confined spaces, or in situations where continuous spray operations are typical, or if proper air purifying respirator fit is not possible, wear a positive-pressure, supplied air respirator (NIOSH TC-19). In all cases follow respirator manufacturer's directions for respirator use. Do not permit anyone without protection in the painting area. This product is intended for industrial use only by professional, trained painters.

